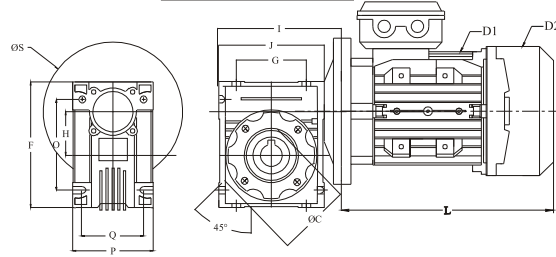
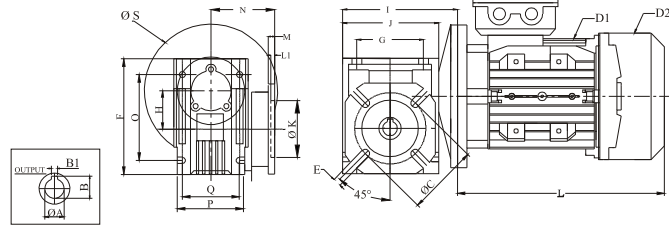


**DYNAFLUX AC WORM GEARED MOTORS**
**FOOT MOUNTING**

**FLANGE MOUNTING**


MECHANICAL DIMENSIONS FOR WORM FOOT TEFC MOTORS.

MODEL	A	B1	B	C	E	F	G	H	I	J	K	L1	M	N	0	P	Q	S
ALM 040	18	6	20.8	75	9	121.5	70	40	120	101	60	4	7	67	90	71	60	160
ALM 050	25	8	28.3	85	11	144	80	50	140	121	70	5	9	90	104	85	70	160
ALM 063	25	8	28.3	150	11	174	100	63	167	146	115	6	10	82	130	103	85	160
ALM 075	28	8	31.3	165	14	205	120	75	198.5	174	130	6	13	111	153	112	90	160

## SPECIFICATIONS

POWER IN WATTS/HP	SPEED IN RPM	VOLTAGE IN VAC	CURR. IN AMPS	RATIO	OUTPUT SPEED IN RPM	TORQUE IN KG-CM	GEAR MODEL	INSL. CLASS	DUTY CYCLE	PROTEC-TION	ENCL.	D1	D2	L	WEIGHT (KG)
180/0.25	2800	415	0.60	10	280	50	030	B	S1	IP44	TEFC	110	120	198	5.5
180/0.25	1400	415	0.60	7.5	190	60	030	B	S1	IP44	TEFC	110	120	198	
180/0.25	1400	415	0.60	10	140	100	030	B	S1	IP44	TEFC	110	120	198	
180/0.25	1400	415	0.60	15	90	140	030	B	S1	IP44	TEFC	110	120	198	
180/0.25	1400	415	0.60	20	70	180	030	B	S1	IP44	TEFC	110	120	198	
180/0.25	1400	415	0.60	30	45	245	030	B	S1	IP44	TEFC	110	120	198	
360/0.5	2800	415	1.1	10	280	110	040	B	S1	IP44	TEFC	130	140	210	8.6
360/0.5	1400	415	1.1	7.5	190	160	040	B	S1	IP44	TEFC	130	140	210	
360/0.5	1400	415	1.1	10	140	210	040	B	S1	IP44	TEFC	130	140	210	
360/0.5	1400	415	1.1	15	90	300	040	B	S1	IP44	TEFC	130	140	210	
360/0.5	1400	415	1.1	20	70	400	040	B	S1	IP44	TEFC	130	140	210	
360/0.5	1400	415	1.1	30	45	530	040	B	S1	IP44	TEFC	130	140	210	
560/0.75	2800	415	1.5	10	280	160	040	B	S1	IP44	TEFC	150	155	240	10.1
560/0.75	1400	415	1.5	7.5	190	240	050	B	S1	IP44	TEFC	150	155	240	11.3
560/0.75	1400	415	1.5	10	140	325	050	B	S1	IP44	TEFC	150	155	240	
560/0.75	1400	415	1.5	15	90	470	050	B	S1	IP44	TEFC	150	155	240	
560/0.75	1400	415	1.5	20	70	600	050	B	S1	IP44	TEFC	150	155	240	
560/0.75	1400	415	1.5	30	45	815	050	B	S1	IP44	TEFC	150	155	240	
560/0.75	1400	415	1.5	30	45	815	050	B	S1	IP44	TEFC	150	155	240	
746/1.0	2800	415	2.0	10	280	225	050	B	S1	IP44	TEFC	150	155	240	13.5
746/1.0	1400	415	2.0	7.5	190	335	050	B	S1	IP44	TEFC	150	155	240	
746/1.0	1400	415	2.0	10	140	440	050	B	S1	IP44	TEFC	150	155	240	
746/1.0	1400	415	2.0	15	90	630	050	B	S1	IP44	TEFC	150	155	240	
746/1.0	1400	415	2.0	20	70	815	050	B	S1	IP44	TEFC	150	155	240	
746/1.0	1400	415	2.0	30	45	1140	063	B	S1	IP44	TEFC	150	155	240	
1110/1.5	2800	415	3.0	10	280	270	050	B	S1	IP44	TEFC	170	175	288	16.0
1110/1.5	1400	415	3.0	7.5	190	370	063	B	S1	IP44	TEFC	170	175	288	18.7
1110/1.5	1400	415	3.0	10	140	490	063	B	S1	IP44	TEFC	170	175	288	
1110/1.5	1400	415	3.0	15	90	670	063	B	S1	IP44	TEFC	170	175	288	
1110/1.5	1400	415	3.0	20	70	850	063	B	S1	IP44	TEFC	170	175	288	
1110/1.5	1400	415	3.0	30	45	1340	063	B	S1	IP44	TEFC	170	175	288	
1110/1.5	1400	415	3.0	30	45	1340	063	B	S1	IP44	TEFC	170	175	288	
1492/2.0	2800	415	4.0	10	280	370	050	B	S1	IP44	TEFC	170	175	318	18.3
1492/2.0	1400	415	4.0	7.5	190	550	063	B	S1	IP44	TEFC	170	175	318	21.0
1492/2.0	1400	415	4.0	10	140	720	063	B	S1	IP44	TEFC	170	175	318	
1492/2.0	1400	415	4.0	15	90	1025	063	B	S1	IP44	TEFC	170	175	318	
1492/2.0	1400	415	4.0	20	70	1330	063	B	S1	IP44	TEFC	170	175	318	
1492/2.0	1400	415	4.0	30	45	1900	075	B	S1	IP44	TEFC	170	175	318	
1492/2.0	1400	415	4.0	30	45	1900	075	B	S1	IP44	TEFC	170	175	318	

**DYNAFLUX** make electric motor suitable for 415±10%,50Hz±5% 3phase supply, ambient temperature 50°C  
 Class 'F' insulation, IP55 protection, continuous rated(S1 duty) with bare shaft & key as per IS: 325  
 Connection box can be rotated by 360° in steps of 90°. Provision of six lead for star/delta connection