

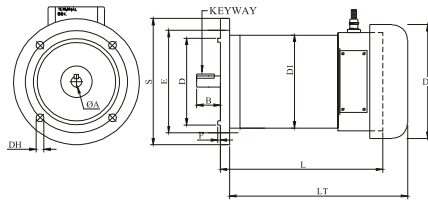
MMC ELECTRIC COMPANY PVT. LTD.

Admin. Off.: 109 / C, Sanjay Building No. 5, Mittal Estate, Sir M. V. Road, Andheri (E), Mumbai - 400 059, India  
Tel. +91-22-6692 0902 / 6692 0903 • Fax: +91-22-40260904 • e-mail: sales@dynafluxindia.com • Website: www.dynafluxindia.com

## DYNAFLUX D118 BATTERY OPERATED P.M. DC MOTORS



**FLANGE MOUNTING**



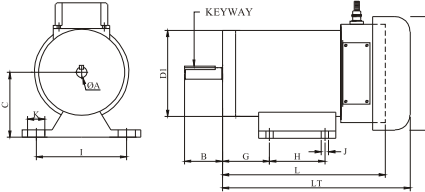
MECHANICAL DIMENSIONS FOR FOOT MOUNTING MOTORS.

D1	FRAME	A	B	C	G	H	I	J	K	KEYWAY
118	118FT	15.85	52	89	65	76	124	10	24	42X5X3D

MECHANICAL DIMENSIONS FOR FLANGE MOUNTING MOTORS.

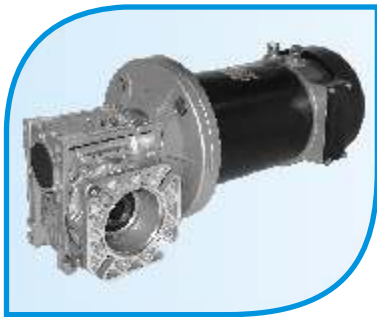
D1	FRAME	A	B	D	S	E	F	DH	KEYWAY
118	63 FR	11	23	95	140	115	3	10	20X4X2D
118	71 FR	14	30	110	160	130	3.5	10	22X5X3D

**FOOT MOUNTING**

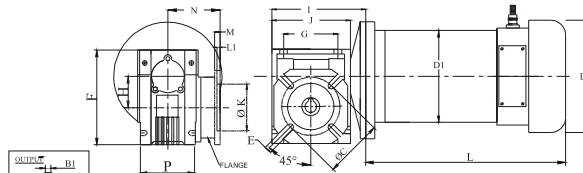


SPECIFICATIONS																		
POWER IN WATTS/HP	SPEED IN RPM		VOLTAGE IN VDC		CURR. IN AMPS		TORQUE IN KG-CM		INSL. CLASS	DUTY CYCLE	PROTEC-TION	TYPE	MOUNT-ING	FRAME	D2	L TENV	LT TEFC	WEIGHT (KG)
	S1	S2	V1	V2	A1	A2	T1	T2										
180/0.25	1500	3000	12	24	18.8	9.3	12	6	B	S1	IP44	TEFC	FOOT	118FT	130	200	232	12.5
180/0.25	1500	3000	12	24	18.8	9.3	12	6	B	S1	IP44	TEFC	FLANGE	71 FR	130	207	239	
180/0.25	1500	3000	12	24	18.8	9.3	12	6	B	S1	IP44	TEFC	FLANGE	63 FR	130	232	264	
360/0.5	1500	3000	12	24	37.5	19.0	24	12	B	S1	IP44	TEFC	FOOT	118FT	130	220	252	
360/0.5	1500	3000	12	24	37.5	19.0	24	12	B	S1	IP44	TEFC	FLANGE	71 FR	130	227	259	14.5
560/0.75	1500	3000	12	24	58.5	29.0	36	18	B	S1	IP44	TEFC	FOOT	118FT	130	-	273	
560/0.75	1500	3000	12	24	58.5	29.0	36	18	B	S1	IP44	TEFC	FLANGE	71 FR	130	-	280	

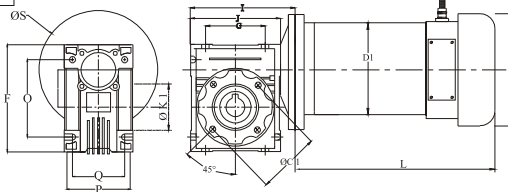
## DYNAFLUX D 118 BATTERY OPERATED WORM GEARED P. M. DC MOTORS



**FLANGE MOUNTING**



**FOOT MOUNTING**



MECHANICAL DIMENSIONS FOR WORM FOOT & FLANGE TEFC MOTORS.

MODEL	A	B1	B	C	C1	E	F	G	H	I	J	K	K1	L1	M	N	O	P	Q	S
ALM 040	18	6	20.8	75	75	9	121.5	70	40	120	101	60	60	4	7	67	90	71	60	160
ALM 050	25	8	28.3	85	85	11	144	80	50	140	121	70	70	5	9	90	104	85	70	160
ALM 063	25	8	28.3	150	95	11	174	100	63	167	146	150	95	6	10	82	130	103	85	160
ALM 075	28	8	31.3	165	115	14	205	120	75	198.5	174	165	115	6	13	111	153	112	90	160

SPECIFICATIONS

POWER IN WATTS/HP	SPEED IN RPM	VOLTAGE IN VDC		CURR. IN AMPS		RATIO	OUTPUT SPEED IN RPM	TORQUE IN KG-CM	GEAR MODEL	INSL. CLASS	DUTY CYCLE	PROTEC-TION	ENCL.	D1	D2	L	WEIGHT (KG)
		V1	V2	A1	A2												
360/0.5	1500	12	24	37.5	19.0	7.5	200	130	040	B	S1	IP44	TEFC	118	130	260	14.8
360/0.5	1500	12	24	37.5	19.0	10	150	170	040	B	S1	IP44	TEFC	118	130	260	
360/0.5	1500	12	24	37.5	19.0	15	100	240	040	B	S1	IP44	TEFC	118	130	260	
360/0.5	1500	12	24	37.5	19.0	20	70	320	040	B	S1	IP44	TEFC	118	130	260	
560/0.75	1500	12	24	58.5	29.0	7.5	200	195	050	B	S1	IP44	TEFC	118	130	280	18.0
560/0.75	1500	12	24	58.5	29.0	10	150	260	050	B	S1	IP44	TEFC	118	130	280	
560/0.75	1500	12	24	58.5	29.0	15	100	370	050	B	S1	IP44	TEFC	118	130	280	
560/0.75	1500	12	24	58.5	29.0	20	70	480	050	B	S1	IP44	TEFC	118	130	280	