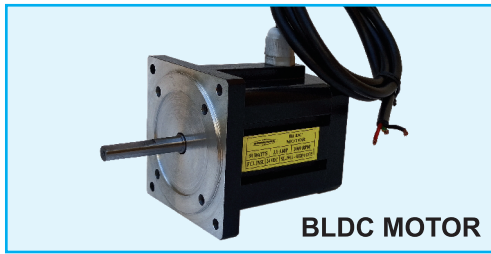


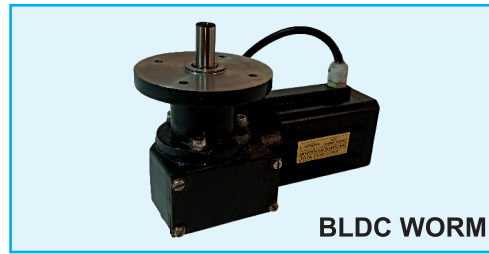
MMC ELECTRIC COMPANY PVT. LTD.

Admin. Off.: 109 / C, Sanjay Building No. 5, Mittal Estate, Sir M. V. Road, Andheri (E), Mumbai - 400 059, India
 Tel. +91-22-40260904 • e-mail: sales@dynafluxindia.com • Website: www.dynafluxindia.com

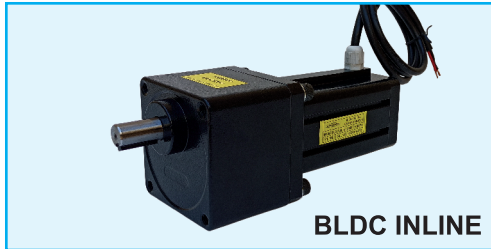
SENSORLESS BRUSHLESS DC MOTORS



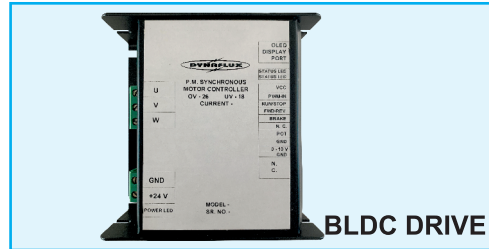
BLDC MOTOR



BLDC WORM

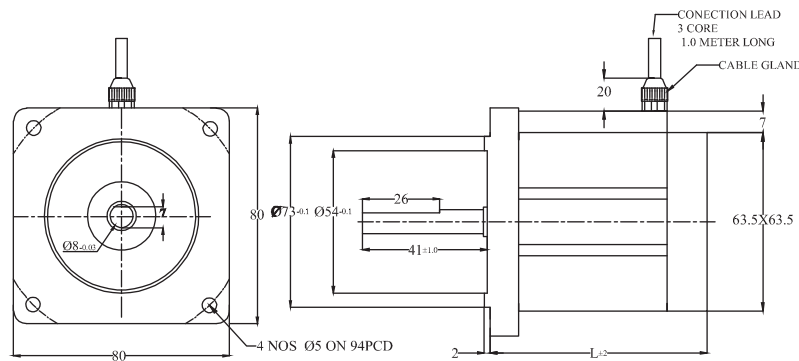


BLDC INLINE



BLDC DRIVE

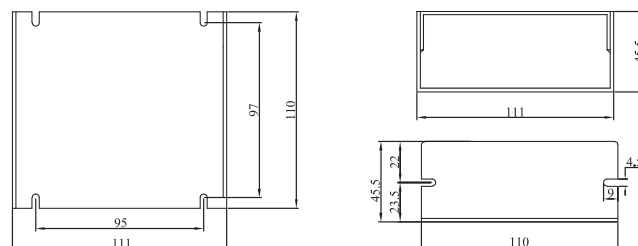
SENSORLESS BRUSHLESS DC MOTORS



ELECTRICAL PARAMETERS.

WATTS	VDC	CURRENT AMPS	SPEED RPM	TORQUE KG-CM	L	WEIGHT (KG)
50	24	3.0	3000	1.6	88	1.2
50	24	3.5	1500	3.2	108	1.5
100	24	6.2	3000	3.2	108	1.5
100	24	6.6	1500	6.5	138	1.9
200	48	6.6	3000	6.5	138	1.9

SENSORLESS BRUSHLESS DC MOTOR CONTROLLER



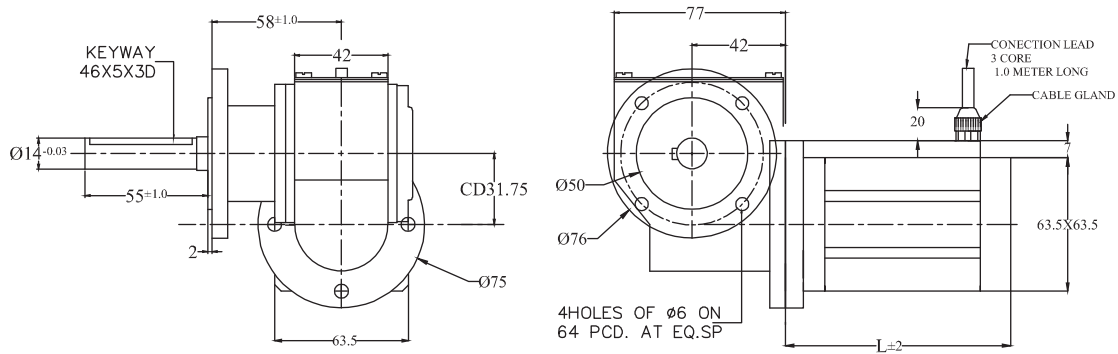
Features:

- Excellent Energy Efficiency Design
- Constant Torque Across Operational speed range (10% To 100% rated speed)
- Protection for Under /Over Voltage, Over Current, Polarity Reversal
- 0-10 vdc for setting ref speed (Optional)
- Pwm In for setting ref speed
- (Optional) Display Control for Speed / Current / Voltage

MMC ELECTRIC COMPANY PVT. LTD.

Admin. Off.: 109 / C, Sanjay Building No. 5, Mittal Estate, Sir M. V. Road, Andheri (E), Mumbai - 400 059, India
 Tel. +91-22-40260904 • e-mail: sales@dynafluxindia.com • Website: www.dynafluxindia.com

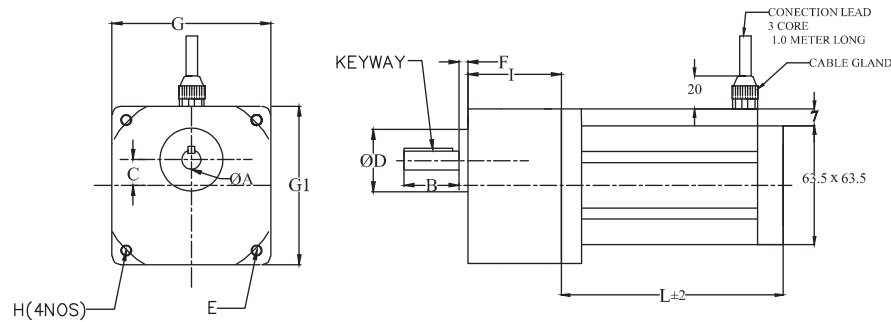
SENSORLESS BRUSHLESS DC WORM GEARED MOTORS



ELECTRICAL PARAMETERS.

WATTS	VDC	CURRENT AMPS	SPEED RPM & TORQUE KG-CM				L	WEIGHT (KG)
			RPM	TORQUE KG-CM				
50	24	3.5	30	60	90	125	114	2.5
			105	55	35	20		
100	24	6.6	30	60	90	125	144	3.0
			200	110	75	45		
200	48	6.6	60	125	185	300	144	3.0
			200	110	75	45		

SENSORLESS BRUSHLESS DC INLINE GEARED MOTORS



MECHANICAL DIMENSION

INLINE	A	B	C	D	E	F	G	G1	H	I	KEYWAY
80X80	10	28	13	32	94	4	80	80	M5	43	25*4*2D
90X90	15	28	18	36.4	104	10	90	90	M8	65	25*5*3D

ELECTRICAL PARAMETERS.

WATTS	VDC	CURRENT AMPS	SPEED RPM & TORQUE KG-CM									L	WEIGHT (KG)
			RPM	TORQUE KG-CM									
50	24	3.5	8	15	30	50	100	120	150	200	300	108	2.2
			150	150	130	80	40	35	27	20	13		
100	24	6.6	8	15	30	50	100	120	150	200	300	138	3.0
			150	150	150	150	80	70	55	40	27		
200	48	6.6	15	30	60	100	200	300				138	3.0
			150	150	150	150	80	55					